

Dual Credit Programming 2025/26



ÉOHS
June 3, 2025



Topics

- Dual Credit Overview
- Dual Credit Process and Expectations
- Onsite Opportunities
- Online Opportunities
- Experiences of Past Dual Credit Students
- Questions

Why Dual Credit?

Allows students in Grades 10-12 to:

- Explore **career pathways** to be more sure of what career you want to pursue. This adds **relevance**, **purpose** and **personalization** to learning.
- Improves **high school achievement and completion**



Why Dual Credit?

Allows students in Grades 10-12 to:

- Unique experience to **explore** your skills and **passions**!



Why Dual Credit?

Allows students in Grades 10-12 to:

- Experience a **post-secondary learning environment** and learn about ongoing opportunities. An opportunity to “**test-drive**” **college** and create comfort with the next step.
- Build **confidence** and develop skills for successful post-secondary transition.



Important to KNOW about Dual Credit...

- Students are enrolled in both a post-secondary institution and their high school concurrently.
- Students earn credits towards both a high school diploma and post-secondary degree or diploma.
- Students are building a post-secondary transcript. (65%)
Dual Credit opportunities are not always a 'right fit' for every student.



Important to KNOW about Dual Credit...

- Students need to be motivated, and a diligent learner.
- Students need to have a strong work ethic to complete assignments and assessments to the best of their ability and on time.
- Grades 10-12 students can be enrolled in dual credit courses. Maturity and readiness is important.



Important to KNOW about Dual Credit...

- Limited Spots
- Not Guaranteed
- The Right Fit

Some Dual Credit Details...



- Each school has an assigned staff person(s) to monitor the progress of each student in a dual credit course.
- As well, we have division supports that oversee learning and support staff who reach out quickly when there are student concerns.
- Dual credit course costs are covered by the division; however, material costs associated with the course will be the responsibility of the student.



What to expect...

- Communication from the post secondary instructors
 - Weekly by email
 - When there's a concern
- Communication from division staff
 - Regularly by email, google meets or on site visits
- Communication from post secondary liaison
 - Regularly by email
- Marks
 - Midterm
 - Final
 - Passing Grades
- Timelines and School Breaks



Dual Credit Processes at EOHS

- Timelines
- Vetting
- Monitoring
- Supporting



OLDS COLLEGE
OF AGRICULTURE & TECHNOLOGY

Onsite



ONSITE Dual Credit: Readiness for the Skilled Trades Level 1 (TEC 1000 & WLD 1167):



- VERY important for ANY student headed towards a skilled trades career.
- Full year, Onsite at Olds College with TEC in 1st Semester(7 full days) and WLD in 2nd Semester (7 full days). Attendance is Mandatory
- Students must have HCS 3000 (Grade 9 Excel)
- Students can be in grades 10-12
- Must regularly be checking email and google classroom
- ILM cost, Material fee, PPE requirements. There is a fee for both courses (TEC \$82.95+ GST, WLD 52.95+ GST approximately for the theory learning materials/ILM's and TEC \$100.00- 150.00 WLD \$100.00- 150.00 for the shop materials). Invoicing will be added to school fees.
- Receive 2 - 30 level credits (4 credits in total)
- Students are responsible for PPE (steel toes boots, safety glasses, welding face shield, welding gloves and coveralls)
- Develop an awareness of the academic rigor required to be successful in the skilled trades. Teams work to mentor students through courses supporting conversations about academic improvement in high school and career readiness.

ONSITE At a Glance (TEC 1000 & WLD 1167):

TEC 1000 Modules

- Modules will be purchased through the Olds College Bookstore and delivered to you on the first day of class. Cost per student is **\$62.95+tax**. Student cost will be added to your school fee accounts.

Materials Fee

- TEC 1000 also has a **\$100** fee for materials, this cost will also be added to your school fee account.
- A **binder** with **6 dividers** for the course modules to be placed in

PPE - Personal Protective Equipment

- Safety Glasses
- Steeled-toed Boots
- No hoodies with drawstrings are permitted in shop spaces

Packed Lunch or Purchasing Lunch

- There will be access to food for purchase at Olds College. Lunch will be ½ an hour and students must remain in designated space for eating. Remember to bring snacks for the day as well as water to drink.

Going to Olds in the a.m.

- Please make sure to arrive prior to your class start time. Students should arrive at 8:50 a.m this will allow you to settle in.

Leaving Olds College for home in p.m.

- Class ends at 3:15p.m. Students depart at the same drop off location.

Location

- For the first class please meet Brianne Fletcher in front of Trades Building #9 on the south side - Refer to Olds College Map.

Time of Class

- 9:00-11:30am and 12:00-3:15pm

Dates

- September 23
- October 8, 24
- November 7, 25
- December 9
- January 8



September						
S	M	T	W	TH	F	S
		1	2	3	4	5
6	7	8	9	10	11	12
13	14	15	16	17	18	19
20	21	22	23	24	25	26
27	28	29	30			

October						
S	M	T	W	TH	F	S
		1	2	3	4	5
6	7	8	9	10	11	12
13	14	15	16	17	18	19
20	21	22	23	24	25	26
27	28	29	30	31		

November						
S	M	T	W	TH	F	S
					1	2
3	4	5	6	7	8	9
10	11	12	13	14	15	16
17	18	19	20	21	22	23
24	25	26	27	28	29	30

December						
S	M	T	W	TH	F	S
1	2	3	4	5	6	7
8	9	10	11	12	13	14
15	16	17	18	19	20	21
22	23	24	25	26	27	28
29	30	31				

January						
S	M	T	W	TH	F	S
				1	2	3
4	5	6	7	8	9	10
11	12	13	14	15	16	17
18	19	20	21	22	23	24
25	26	27	28	29	30	31

February						
S	M	T	W	TH	F	S
						1
2	3	4	5	6	7	8
9	10	11	12	13	14	15
16	17	18	19	20	21	22
23	24	25	26	27	28	29

March						
S	M	T	W	TH	F	S
						1
2	3	4	5	6	7	8
9	10	11	12	13	14	15
16	17	18	19	20	21	22
23	24	25	26	27	28	29

April						
S	M	T	W	TH	F	S
						1
2	3	4	5	6	7	8
9	10	11	12	13	14	15
16	17	18	19	20	21	22
23	24	25	26	27	28	29

[Ecole Olds High # 1](#)
[Ecole Olds High # 2](#)

ONSITE Dual Credit: Readiness for the Skilled Trades Level 2- WLD 2167



- Students who have taken the prerequisite of TEC 1000/WLD 1167 can further their understanding of safety and welding practices to further prepare their work resume and skills for career success in any skilled trade.
- Students will be at Olds College for 12 full days in Semester 1 & Semester 2.
- Students will receive a calendar of dates that they will be expected to be onsite at Olds College.
- Students are responsible for PPE (steel toes boots, gloves, safety glasses and coveralls)
- There is a Fee for the course (\$62.95+ GST approximately for ILM and \$150.00- \$200.00 for shop material fees)
- **5** Fabrication credits for the WLD 2167 course



ONSITE Dual Credit: Readiness for the Skilled Trades Level 2- Hydraulics and Electrical



- Students who have taken the prerequisite of TEC 1000/WLD 1167 can further their understanding of Electrical and Hydraulics practices to further prepare their work resume and skills for career success in any skilled trade.
- Students will be at Olds College for 12 full days in Semester 1 & Semester 2.
- Students will receive a calendar of dates that they will be expected to be onsite at Olds College.
- Students are responsible for PPE (steel toes boots, gloves, safety glasses and coveralls)
- Training by Olds College Heavy Equipment Journeyperson
- Students will expand their industry ready technician skills gained in Level 1
- Shop consumable material cost approx. \$150.00 + \$40.00 for Learning Materials



ONSITE Dual Credit:

Meat Processing Certificate

- 25 30 level credits
- First year completion of Meat Processing.
- September 2025 OR May 2026 start or - two seats available each school year.



Pre- Employment Heavy Equipment Technician- Olds College

- 15 30 level credits- interviews in June 2025
- First year theory completion of Heavy Equipment Technician.
- March start, 12 weeks at Olds College.

Pre- Employment Welding- Olds College

- 15 30 level credits- interviews in June 2025
- First year theory completion of welding.
- March start, 12 weeks at Olds College



OLDS COLLEGE
OF AGRICULTURE & TECHNOLOGY



**Red Deer
Polytechnic**

INTERVIEWS will be scheduled for June 2025

ONSITE Dual Credit:

Pre- Employment-Automotive Service Technician Red Deer Polytechnic

- 15 30 level credits- interviews in June 2025
- First year theory completion of Automotive Tech
- April start, 12 weeks at Red Deer Polytechnic



Pre- Employment- Steam Fitter Pipe Fitter Red Deer Polytechnic NEW

- 15 30 level credits- interviews in June 2025
- First year theory completion of Pipe Fitting
- TBA Red Deer Polytechnic



OLDS COLLEGE
OF AGRICULTURE & TECHNOLOGY

INTERVIEWS will be scheduled for June 2025



**Red Deer
Polytechnic**



Sky Wings Aviation Ground School Training

Is your career dream connected to aviation? Whether your plan is cruising around the world as a captain for the airlines, flying an air ambulance, or teaching others the joys of soaring through the air, you can make a rewarding career out of aviation. Our comprehensive and professional program will prepare you for your goals. Our Students have gone on to fly for major carriers and airlines all over the world, and you can too!

Program Description

Students will learn Theory of Flight, Air Law, Meteorology, Engines and Airframes, Weight Balance, Performance Charts, CFS, E6B, Communications, Navigation, Human Factors, Pilot Decision Making, and Flight Operations and Instruments. Ground school commences in the month of **OCTOBER and again in APRIL** with programming set for every Tuesday and Thursday from 6:00-8:30-9 and Saturdays from 8:00 am- 2:00 pm.

INTERVIEWS will be scheduled for June 2025

MEDT 211- Medical Terminology 1

Pathway- Health Care Programs



- This self directed introductory course enables the learner to use and understand medical terminology common to most allied health personnel.
- We will need to have student interest/registration by November/December to order textbooks for the program, I will connect with students who have submitted candidates of exact dates.
- Program start date is January with the start day TBA.
- 5 seats for 25-26 with selection based on student readiness for the course and focused on a medical career....even better if they plan to attend SAIT...this course is a standard course in their medical related programs.
- Textbook cost \$100.00- 150.00

INTERVIEWS will be scheduled for Nov/Dec 2025

Exploratory Hair Styling Experience & Delmar College



Students who are interested in the profession of hair styling and barbering have an opportunity once again to prepare for period one training in these fields. There will be THREE intakes for Exploratory Hair Styling Experience September- December and then again February- April and again April- June for 12 onsite days. Applicants who complete the Exploratory Hair Styling Experience will then have the opportunity to apply for the Delmar College Experience commencing July -August with 17 onsite days at Delmar College over the summer.

INTERVIEWS will be scheduled for Nov/Dec 2025



OLDS COLLEGE
OF AGRICULTURE & TECHNOLOGY

FALL 2025



Break
new
ground.



Veterinarian Technical Assistant Program



OLDS COLLEGE
OF AGRICULTURE & TECHNOLOGY



ACT 1011

Accounting Principles 1

Pathway: Business Management Diploma



Students will gain an introduction to financial accounting focusing on the accounting cycle and the preparation of financial statements. Topics include accounting for merchandising activities, internal control, accounting for cash, temporary investments, accounts receivable, inventories, cost of goods sold, and current liabilities. Students should have successfully completed Math 10C with a minimum of 70% or higher OR have completed a Math 20-1 or 20-2.

ANH 1050 - INTRO TO VETERINARY PROFESSION

Pathway: Animal Health Programs



Students will become familiar with selected animal health organizations that adhere to the regulations of veterinary medicine in Alberta. Students are introduced to strategies and techniques for managing self and interacting with others. Students will examine animal welfare and ethical issues. This course provides students with foundational veterinary medical terminology they will use throughout their career. And we will wrap up the course with a brief history of animal welfare and how to apply critical thinking to animal welfare situations.



ATG 1008

Solving Technology Problems

Pathway: Precision Agriculture - Techgronomy Diploma



Students will engage in the problem-solving process using current hardware and software tools for applied data-driven problem solving. Through data analysis, algorithmic problem solving, and technical memo writing students will work to solve a technical agricultural issue. Coding and Microsoft spreadsheets (graphing/figures/charts) will be key skills learned and put into action using the Zumo robot.

*Prior coding skill not required but students should be comfortable with math (algebra and polynomials at minimum grade ten level) and working hard in the trial and error process involved with learning to code. Students should be completed Math 10C and be ready to work hard on learning coding skills using Excel.

***ATG 1007 will NOT be offered in winter term this year**



EVS 1210 - Applied Ecology

Pathway: Land & Water Resources Diploma



Students will be provided an introduction to ecological principles at the species, population, community and ecosystem levels. Specific application of ecology to sustainability and the management of forest and grassland ecosystems are studied.

CEA 1000

Fundamentals of Controlled Environment Agriculture

Pathway: Indoor Agriculture



Students will learn the essential elements and practices of Controlled Environment Agriculture (CEA) in this foundational course. This course introduces students to various CEA systems, regulations and operational requirements within this emerging sector.

*Material list will be provided in September. There may be a fee for students.

HAT 1255

Global and Sustainable Tourism

Pathway: Hospitality and Tourism Management Diploma

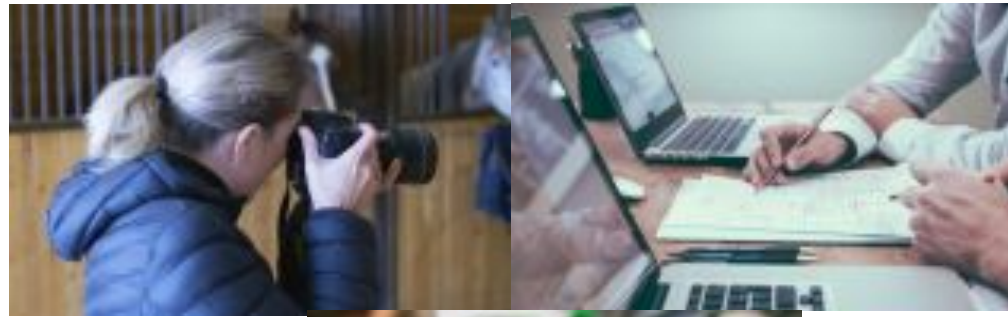


In this course, students examine current and emerging trends and issues related to eco-tourism and sustainability in the tourism industry. They explore rural and cultural tourism with a focus on agriculture, Indigenous and food tourism that helps to identify products, services and opportunities in these areas.

MKG 1021

Marketing Principles

Pathway: Business Management Diploma



Students will develop an understanding of marketing concepts, principles and Practices. Topics examined include the influence of environmental factors on the marketing Process, marketing strategy development, marketing mix formulation and adjustment for pricing, promoting and distributing appropriate products and services to selected markets.

MDL 1040

Digital Media Production- Video, Audio and Images

Pathway: Agriculture Communication



Digital Media Production course covering video, audio, and image creation. The course teaches students how to produce short, professional videos, podcasts, infographics, and posters. It's offered as part of the Agriculture Communications Certificate program. *Supplies will be determined in September.

SPM 1260 - Introduction to Sports Management

Pathway: Business Management Diploma - Sports Management Major



Students will analyze various management models and organizational structures within the sport and recreation industry.

Content areas include professional, amateur, Olympic, and intercollegiate sports.



OLDS COLLEGE
OF AGRICULTURE & TECHNOLOGY



Red Deer
Polytechnic

FALL 2025



PSYC 1001

Principles of Psychology 1

Pathway: Bachelor of Arts in Psychology, Bachelor of Science of Psychology



About This Course

Are you interested in learning about how our brains work? This course can be used towards the completion of a Bachelor of Arts or Science in Psychology Degree program as well as can be taken as an elective for many other programs. Please refer to the program of interest to see the minimum grade requirement for this course.

Course Description

Discover the fundamental terminology, procedures, findings, and theories related to basic psychological processes. Explore the history and nature of psychology and research methods in this field. Learn about the psychological and biological foundations of behaviour, sensation and perception, consciousness, learning, memory, language and thought. Learn about sociological perspectives, methods, and concepts used to analyze social behaviour. Examine how culture, socialization, institutions, and interactions impact on social life.

KNSS 1210

Personal Fitness and Wellness

Pathway: Kinesiology and Sport Studies Diploma

About This Course

An exploration and application of the foundations of health, wellness and fitness from a personal perspective. Theory and practical strategies are used to empower the student in developing healthy active lifestyles.

Course Description

If you are interested in developing a healthy lifestyle and learning about what factors influence your overall fitness and wellness, this course may be of interest to you! This course can be used towards the completion of a Kinesiology & Sports Studies Diploma, a Justice Studies Diploma, as well as can be taken as an elective for many other programs. Please refer to the program of interest to see the minimum grade requirement for this course.

*Onsite lab days (1-2) will be scheduled during this course. Please make students aware and ensure they have transportation.



HSCI 1115

Biology of Health

Pathway: Pre- Health

Science Certificate



About This Course

Examine human biology from a microscopic to macroscopic level. Describe homeostasis and the function of cells within the body.

Course Description

This course focuses on concepts relevant to understanding human health and disease. The various foundational topics of anatomy and physiology provide students with the ability to apply their knowledge to the many health-related disciplines. The course begins with a look at terminology because this is critical for understanding what is being said as well as interpreting documents and research. As the content builds from a cellular to a systemic level, it shows how the human body is organized and how systems become reliant on one another.

**Prerequisite of Bio 20-
minimum of 50%**



OLDS COLLEGE
OF AGRICULTURE & TECHNOLOGY

WINTER 2026



ACT 1012

Accounting Principles 2

Pathway: Business Management Diploma



This course is a continuation of ACT 1011 to allow for additional study of accounting at an introductory level. Topics include capital assets, long term liabilities, partnership accounting, accounting for corporations, financial analysis techniques, as well as the cash flow statement using various technologies.

Students should have successfully completed Math 10C with a minimum of 70% or higher OR have completed a Math 20-1 or 20-2.

****Students must have successfully completed ACT 1011**

ANH 1050 - INTRO TO VETERINARY PROFESSION

Pathway: Animal Health Programs



Students will become familiar with selected animal health organizations that adhere to the regulations of veterinary medicine in Alberta. Students are introduced to strategies and techniques for managing self and interacting with others. Students will examine animal welfare and ethical issues. This course provides students with foundational veterinary medical terminology they will use throughout their career. And we will wrap up the course with a brief history of animal welfare and how to apply critical thinking to animal welfare situations.



ANH 1510 - Veterinary Medical Terminology

Pathway: Veterinary Medical Receptionist

Students will be expected to use veterinary medical terminology as a part of the animal care team in industry. In this course, students will differentiate and apply components of animal health system terminology for small, large and companion exotic species.



CEA 1040

Operating Controlled Environmental Systems

Pathway: Indoor Agriculture Certificate



Students will gain practical experience with optimizing crop production and diagnosing problems while minimizing environmental impact. By the end of the course, students will have the necessary skills to operate and troubleshoot systems, incorporating integrated pest management and waste management in Controlled Environment Agriculture (CEA) systems.

COM 1020

Workplace Communication: Post Secondary Success Preparation

Pathway: Post Secondary Preparation



In this course students develop writing and presentation skills. Students will apply rules of grammar, spelling, punctuation and mechanics in the development of letters, email and short reports as well as other documents relevant to their industry. Students will demonstrate strategies and techniques for creating informative and persuasive presentations

GIS 1300

Introduction to Geographic Information Systems

Pathway: Environmental Science & Technology



This course introduces the concepts and applications of GIS technology (Geographic Information Systems). The student will gain hands-on experience using desktop and online GIS software in a computer lab environment. Students will use datasets from commercial sources for GIS projects. The GIS will be used to view, manage, and query spatial data, and to create various map outputs suitable for reports and presentations.

MGT 1000

Principles of Management

Pathway: Business Management Certificate

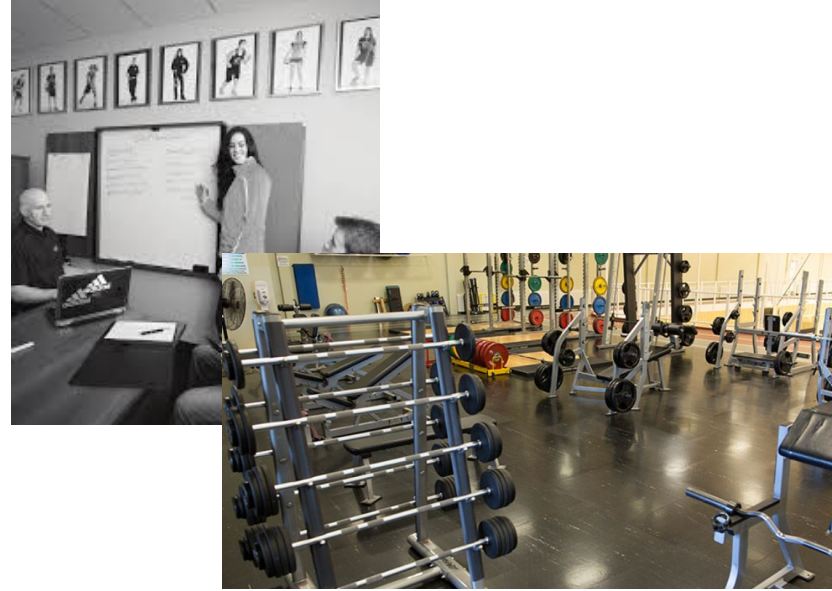


Today's managers perform the functions of planning, organizing, leading and controlling, and must do so within the context and constraints of environmental and social pressure and demands. This course examines the role of the manager and the skills and techniques needed to effectively and efficiently manage the resources of people, money, materials and time to achieve organizational objectives. Throughout this course, students will be required to demonstrate understanding of the key principles and functions of management, and to apply these skills in contemporary business situations.

SPM 1020 - Training for Performance

Pathway: Business Management Diploma - Sports Management Major

Students will learn about various aspects of training for performance. They will analyze the basic science behind activity, energy systems, and macro-cycles in sport training. Consideration will also be given to diverse populations, training facilities, equipment, schedules, budgets, as well as individual and team training preferences.





Red Deer
Polytechnic

WINTER 2026



ELCC 1213

Early Learning and Childcare- Interpersonal Relations Pathway: Early Learning and Child Care Certificate or Diploma.



**Textbook Cost: hard copy \$109.95, online
version \$74.95**

About This Course

Are you interested in a career working with children? Are you interested in improving your communication skills to become more employable? This course goes over how to navigate different forms of communication.

Course Description

The degree to which early childhood professionals can understand and value others is directly related to the degree of self-understanding and self-acceptance they possess. Therefore, a crucial aspect of ELCC 213 is aimed at gaining knowledge and a sound understanding of self, and self in relation to others. This course will also focus on the interpersonal dynamics and communication processes of effective relationships.

HCA 1001

Health Care Aide Roles and Responsibilities

Pathway: Health Care Aide Certificate Programs



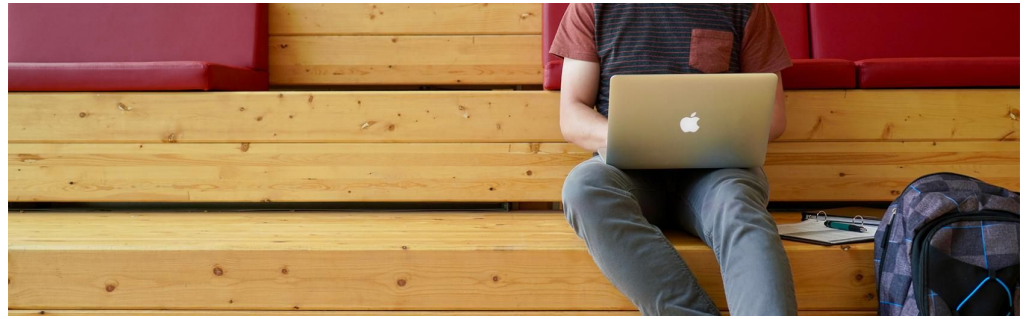
**Textbook Cost: Sorrentino's
59.95 + Workbook- \$33.59, Clinical Skills-
\$39.95= 132.68**

During this course, you will focus on the role and responsibilities of a Health Care Aide working in a variety of employment settings. The focus of this course is to share information that will result in safe, ethical, and respectful care based on the needs of the client. Care that meets these standards is known as person-centered care. To meet the goal of person-centered care, the health care aide must be familiar with the provincial legislation that guides safe, ethical, and personalized care. In addition, knowledge of how to work as part of the health care team is essential, as is the ability to follow your employer's policy and procedures and your job description. The HCA is responsible for identifying, managing, and preventing potential environmental hazards in facilities and community-based settings and focusing on the client's safety as well as your own safety in different settings.

SOCI 1260

Introductory Sociology

Pathway: Bachelor of Arts- Sociology



About This Course

Are you interested in learning about social interaction? This course can be used towards the completion of a University Transfer: Bachelor of Arts Sociology Degree as well as can be taken as an elective for many other programs. Please refer to the program of interest to see the minimum grade requirement for this course.

Course Description

Learn about sociological perspectives, methods, and concepts used to analyze social behaviour. Examine how culture, socialization, institutions, and interactions impact on social life.

Textbook Cost \$ 70.00-100.00

Fire Cadets with Olds Fire Department



GREEN CERTIFICATES



WORK EXPERIENCE AND REGISTERED APPRENTICESHIP PROGRAM



DUAL CREDIT STUDENT EXPERIENCE

- Cheye-Anne Wessels
- Meah Leger

NEXT STEPS AND PROCESS FOR DUAL CREDIT

- Semester 1→ May, June, and September
- Semester 2→ December
- Google Form→ Today and During Grade 10 Course Selection
- Early June→ Dual Credit Information Session
- Talk to Mr. Hronek, Mrs. Kemmere or Mrs. Hamilton
- jkemmere@cesd73.ca
- khronnek@cesd73.ca

Questions

